



## FMINT16 Fitting Instructions



Please thoroughly read through and familiarise yourself with these instructions in their entirety prior to beginning any part of the installation process of any component. Please also ensure the vehicle and engine has cooled down sufficiently to avoid risking possible skin burns or other injury.

### TOOLS NEEDED:

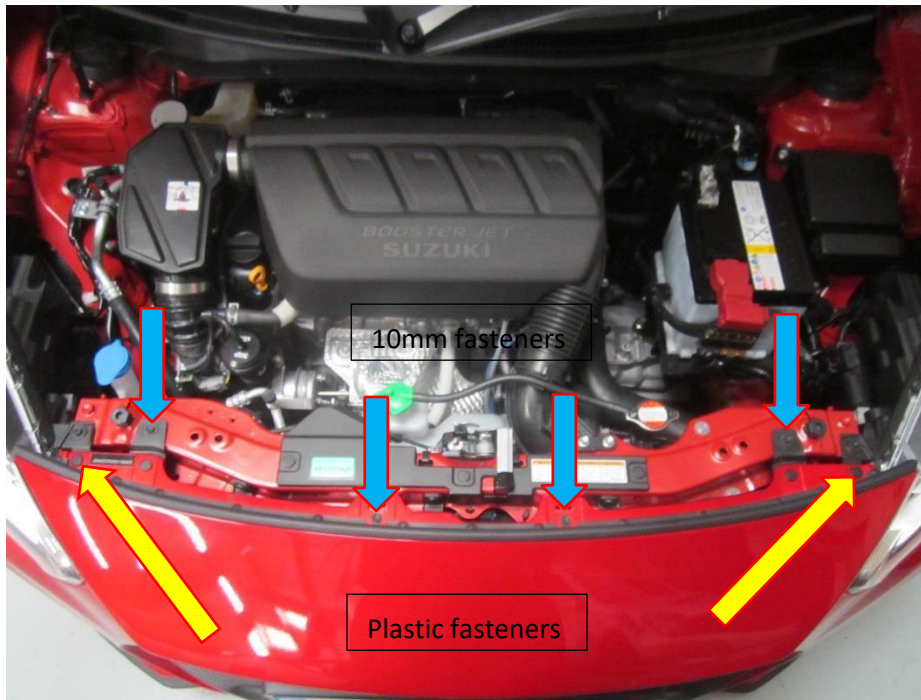
10mm ratchet and drive

8mm ratchet and drive/ Hose Clamp removal tool

Phillips screw driver

Flat blade screw driver/trim removal tool

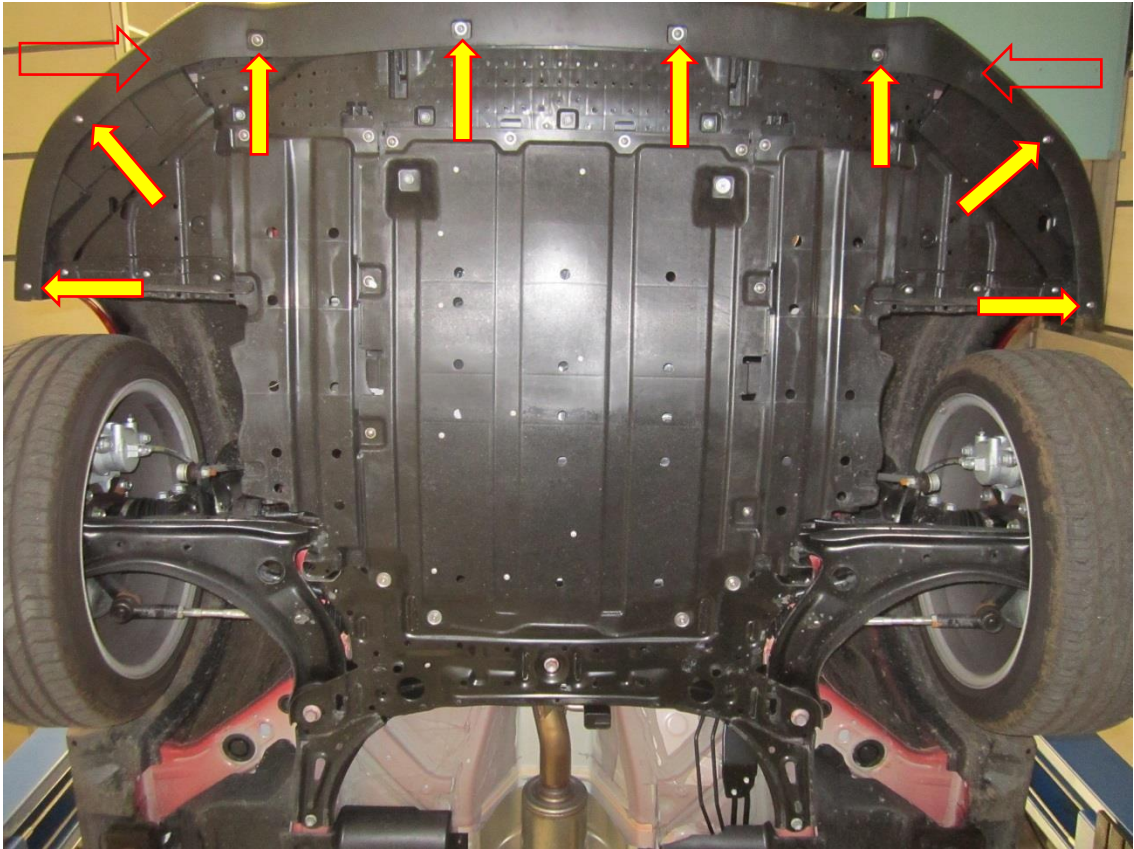
1. Open the bonnet and locate the two plastic fasteners attaching the bumper to the slam panel. Use a flat blade screw driver or trim removal tool to release these fasteners. Next there are four 10mm fasteners that now need to be removed, use a 10mm ratchet to unscrew them.



2. There is a Philips screw each side of the inner arch attaching the



3. Raise the vehicle in the air via a ramp or with axel stands, so that you can access the eight Philips fasteners on the front valance of the bumper. Remove all eight fasteners with a screw driver, with done you will be left with two plastic fasters that also will need to be removed in the same way as step one.



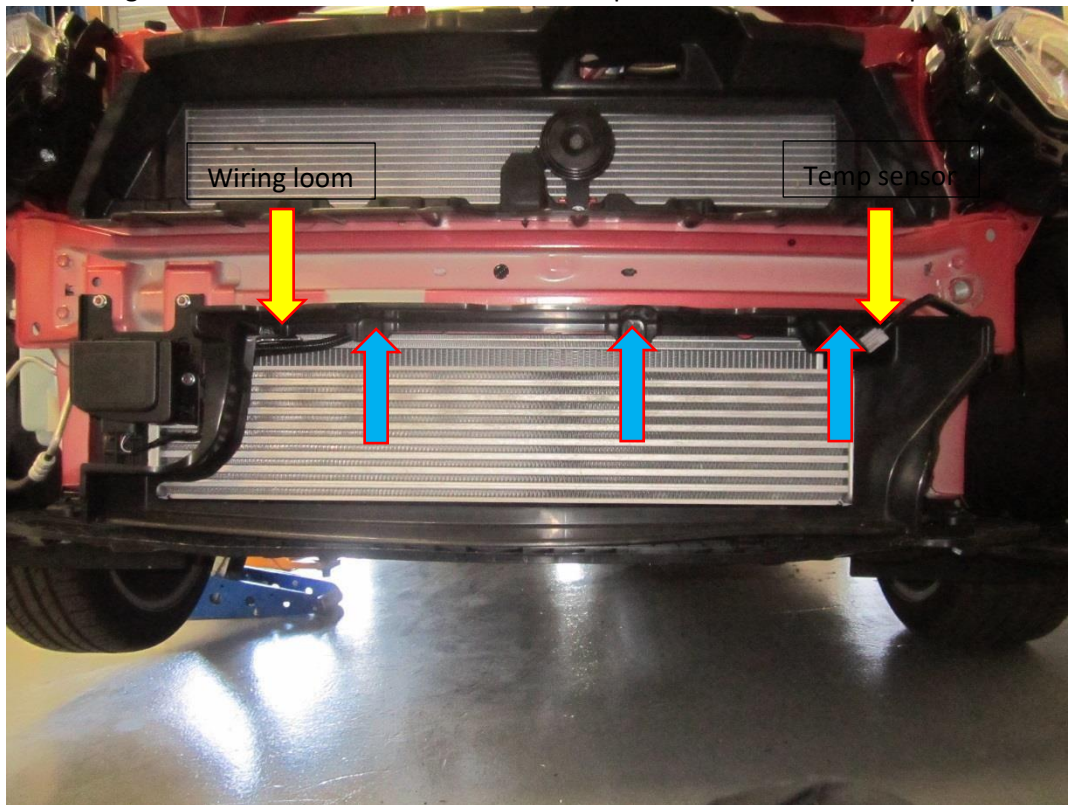
4. Pull each side of the bumper out wards starting from nearest to the wheel. The bumper will then pull away from the car, do not pull it completely off the car as the fog lights will need to be disconnected first. These simply un clip.



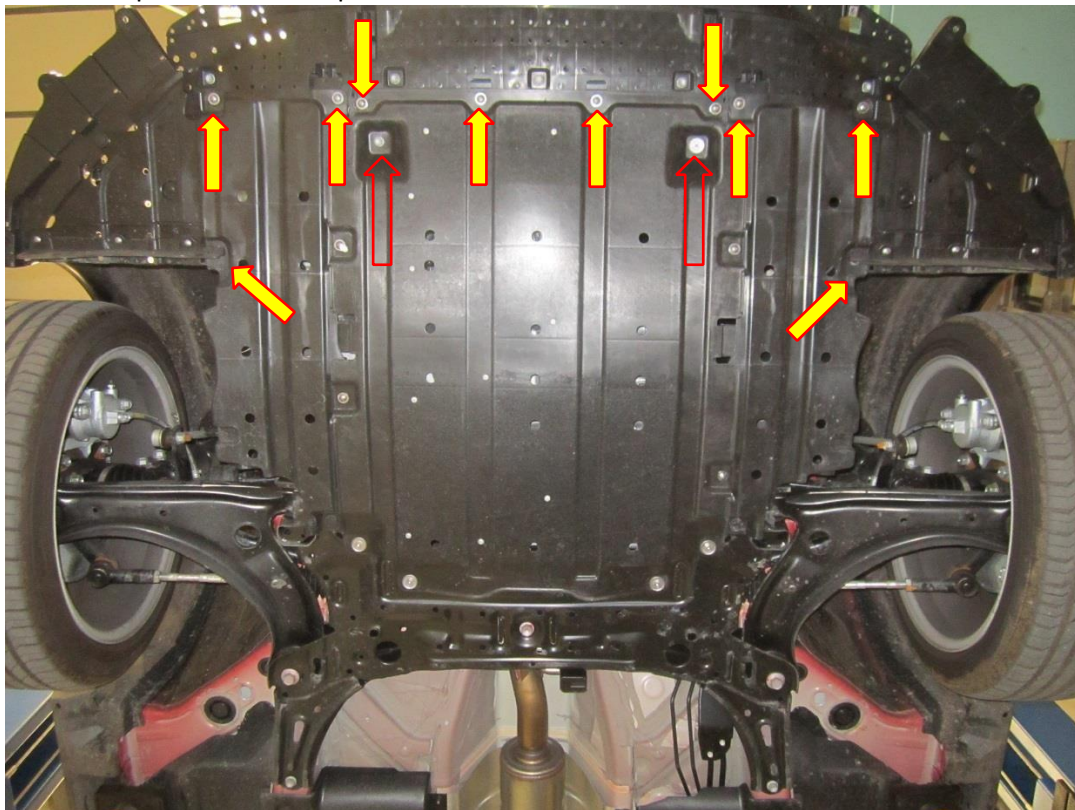
5. Now with the bumper removed you will see the OE intercooler, there is air ducting in front of the intercooler that needs to be removed. First remove the three plastic fasteners running along the top of the air ducting



and unclip the air temperature sensor and the wiring loom with the use of a flat blade screw driver or trim tool. The ducting will not be able to be removed until steps six and seven are completed.



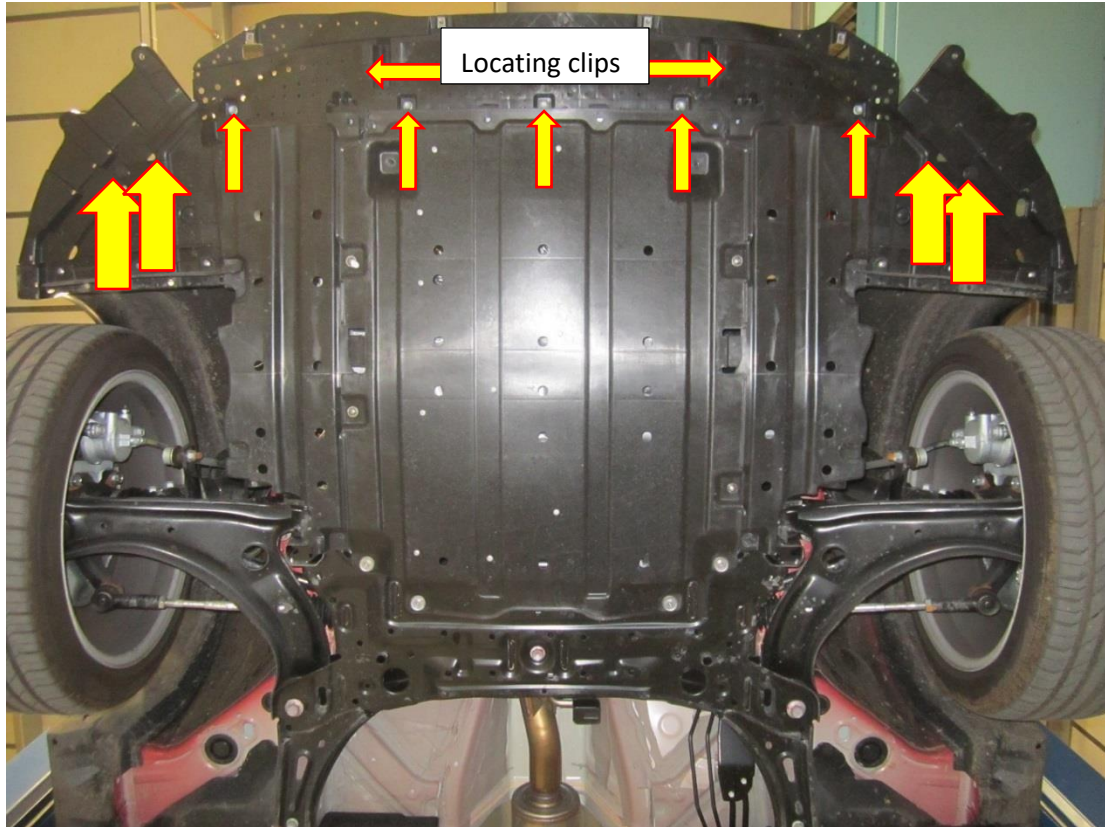
6. Accessing the car from underneath there are plastic covers that will need to be unfastened, to do this remove ten Philips fasteners Philips crew driver two 10mm fasteners with a 10mm socket and ratchet drive.



7. There are nine 10mm fasteners that now need to be removed from the front cover, use a 10mm socket and ratchet drive to undo them. Three of these fasteners which are shown in the picture by the four larger arrows



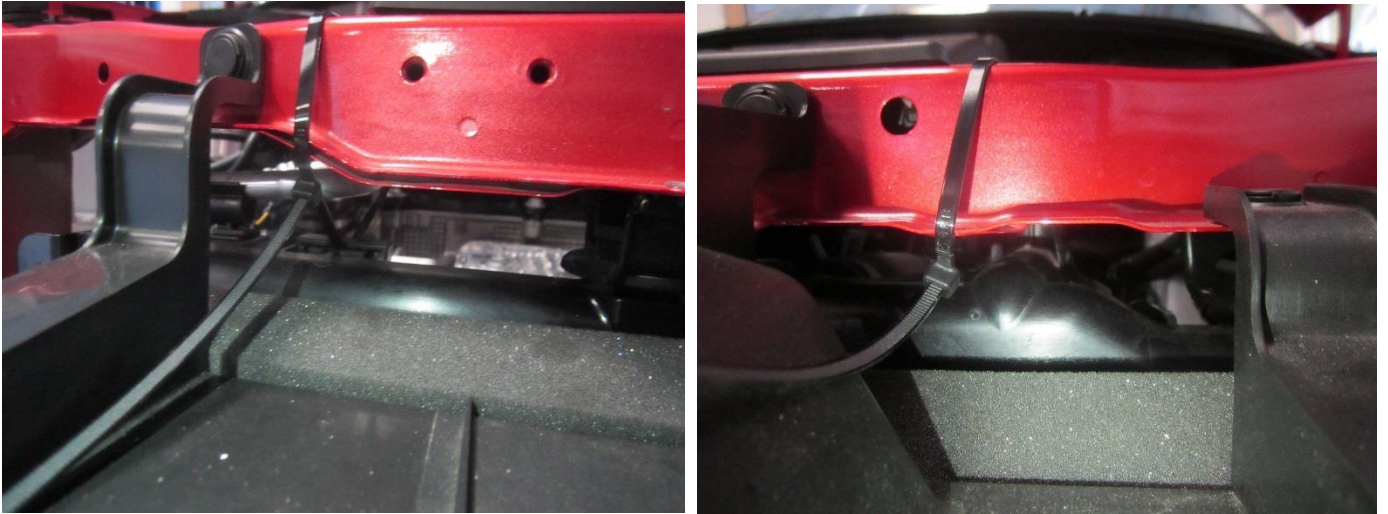
are located underneath the side cover, there is enough slack to pull this side cover down and undo these 10mm fasteners. With this done pull the front cover forwards and push the two locating clips inwards and then you will be able to release the cover from the vehicle.



8. With this cover now removed you will be able to access the four plastic fasteners at the bottom of the air ducting, remove these with a flat blade screw driver or trim removal tool.



9. With the cable ties provided with FMINT16 secure the radiator by wrapping the cable tie around the slam panel and through the plastic loop on the off side and around the filler neck on the near side of the radiator. This needs to be done to keep it in place after the next step is completed.

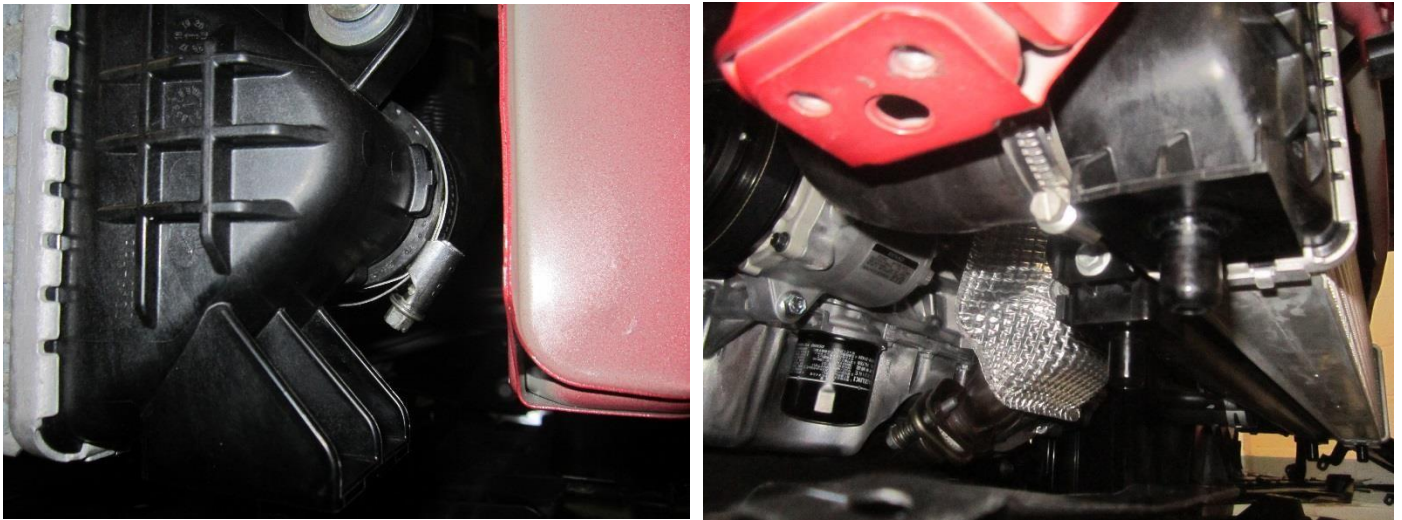


10. There is a black metal mounting bracket which needs to be removed, there are four 10mm fasteners that hold it in place use a 10mm socket and ratchet to remove them and the bracket will free from the vehicle.





11. With the mounting bracket removed the next step is to undo the two hose clamps securing the rubber hoses to the inter cooler. They have 8mm fastenings which can be loosened off with an 8mm socket and ratchet drive or a flat blade screw driver.



12. The final stage for removal of the OE inter cooler is to remove the two 10mm fasteners attaching the intercooler to the vehicle, use a 10mm ratchet and drive to release fasteners and you be able to release the inter cooler from the vehicle.



13. Now you will be able to install your new Forge Motorsport intercooler. Carefully angle the intercooler behind the ACC bracket and loosely re fit the two 10mm fasteners to hold the intercooler in place. You can then slide the hoses back on, locate the hoses as you can and the tighten the hose clamps up. Finally tighten the 10 mm fasteners.



14. To complete your installation, follow steps one to nine in reverse order. Now with your new FMINT16 fitted go for a test drive and enjoy the added performance to Suzuki.